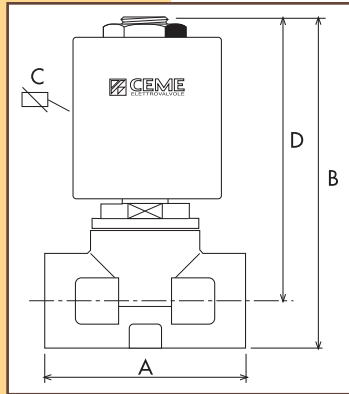


CARATTERISTICHE SPECIFICATIONS



ATTACCHI PIPES in → out	Ø mm	CODICE CODE	KV m ³ /h	M.O.P.D. bar		DIMENSIONI/DIMENSIONS mm				PESO/WEIGHT Kg
				AC	DC	A	B	C	D	
1/4 NPT	11	8302	1.40	20	20	55	91	60	78	0.560
3/8 NPT	11	8303	1.50	20	20	55	91	60	78	0.535
1/2 NPT	11	8304	1.60	20	20	55	91	60	78	0.500
G 1/4	11	8322	1.40	20	20	55	91	60	78	0.560
G 3/8	11	8323	1.50	20	20	55	91	60	78	0.535
G 1/2	11	8324	1.60	20	20	55	91	60	78	0.500

AZIONE DIRETTA - DIRECT ACTING - DIREKTGESTEUERTES P. MIN. = 0 bar

ATTACCHI PIPES in → out	Ø mm	CODICE CODE	KV m ³ /h	M.O.P.D. bar		DIMENSIONI/DIMENSIONS mm				PESO/WEIGHT Kg
				AC	DC	A	B	C	D	
G 1/4	11	8332	1.50	0.5	0.3	55	91	60	78	0.560
G 3/8	11	8333	1.60	0.5	0.3	55	91	60	78	0.535
G 1/2	11	8334	1.70	0.5	0.3	55	91	60	78	0.500

CARATTERISTICHE ELETTRICHE ELECTRICAL INFORMATION

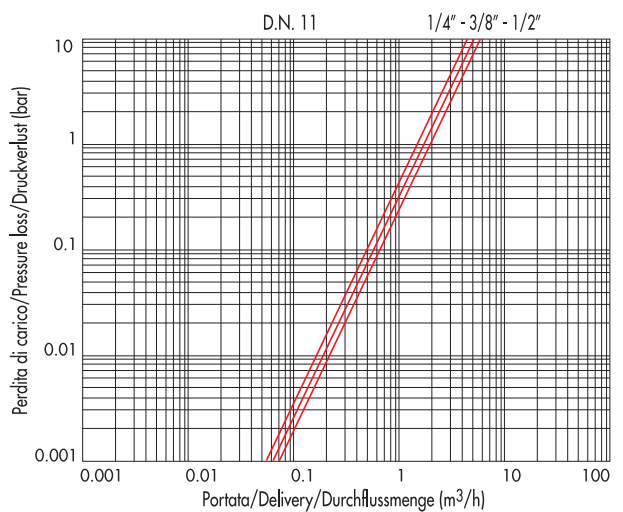
	POTENZA/POWER			
	8322-23-24 8332-33-34			
	NOMINALE HOLDING		SPUNTO IN RUSH	
V~	12 24 48 110 230 400	50 60 Hz	22VA	41VA
V=	12 24 48 110		21W	

Per dettagli costruttivi sulle bobine vedi capitolo "INFORMAZIONI DI PROGETTO"
For construction details of the coils see chapter "PROJECT INFORMATION"
Ausführliche Daten über die Ventilsolenen finden Sie unter Abschnitt "TECHNISCHE
INFORMATIONEN"

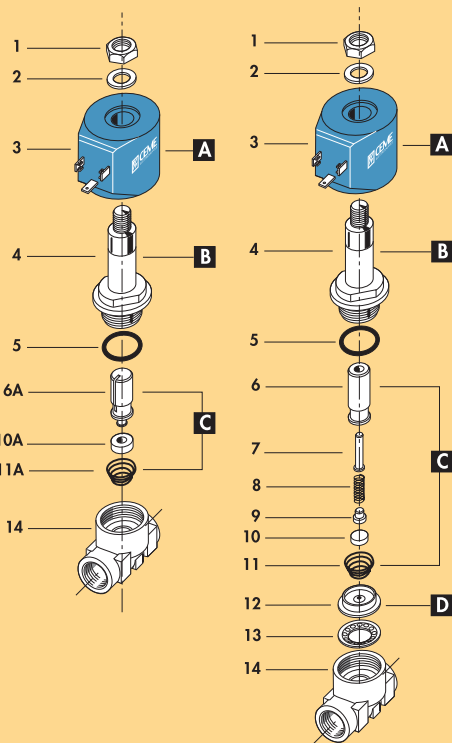
MAX TEMPERATURA MAX TEMPERATURE

FLUIDI/FLUIDS			AMBIENTE/AMBIENT
NBR	FPM	EPDM	80°C
90°C	150°C	130°C	

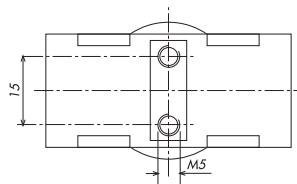
DIAGRAMMA PERDITA DI CARICO PRESSURE LOSS DIAGRAM



8332
8333
8334



1 Dado	Lock nut	Mutter
2 Rondella	Washer	Beilagscheibe
3 Bobina	Coil	Magnetspule
4 Nucleo fisso	Tube top	Kern
5 O-ring	O-ring	O-ring
6 Nucleo mobile	Plunger	Plunger
7 Ammortizzatore	Shock-absorber	DNmpfer
8 Molla	Spring	Feder
9 Piattello	Support	Scheibe
10 Pastiglia	Seal	Dichtung
11 Molla	Spring	Feder
12 Membrana	Diaphragm	Membrane
13 Piattello	Support	Scheibe
14 Corpo	Valve body base	Grundkörper
RICAMBI	SPARE PARTS	ERSATZTEILE
A Bobina	Coil	Magnetspule
B Cannotto	Tube guide	Plungerrohr
C Nucleo mobile	Plunger	Plunger
D Membrana	Diaphragm	Membrane



**ELETTROVALVOLA SERVOCOMANDATA 2/2 VIE N.C.
SOLENOID VALVE PILOT OPERATED 2/2 WAY N.C.
SERVOGESTEUERTES MAGNETVENTIL 2/2 WEGE S.G.**



I

CARATTERISTICHE GENERALI

PRESSIONE MINIMA DIFFERENZIALE DI FUNZIONAMENTO 0,1 bar (modelli 8332-33-34 0 bar)

PARTI A CONTATTO CON IL FLUIDO:

TENUTA FPM, NBR per 8332-8333-8334
CORPO OTTONE
ORGANI INTERNI ACCIAIO INOX
FLUIDI ARIA - ACQUA - GAS INERTI - OLII LEGGERI

VALVOLA UNIDIREZIONALE

VALVOLA ISPEZIONABILE

Valvola fornita con

POSIZIONE DI MONTAGGIO:

TEMPERATURA AMBIENTE:

ESECUZIONI SPECIALI

CONNETTORE TRIPOLARE UNI ISO 4400 (DIN 43650A)-IP65
Qualsiasi; sconsigliata quella con bobina rivolta verso il basso
80°C, in D.C. per temperature superiori ai 40°C, le performance (M.O.P.D.) potrebbero diminuire.
TENUTA IN EPDM, NBR
VERSIONE AD AZIONE DIRETTA: 8332, 8333, 8334
PER I MODELLI 8332, 8333, 8334 E' DISPONIBILE UNA BOBINA SPECIALE PER AUMENTARE LA PRESTAZIONE IN D.C. (M.O.P.D.) A. 0,5 bar
TIMER PER REGOLAZIONE TEMPI D'INTERVENTO (vedi accessori a pagina 95)

ACCESSORI

UK

GENERAL FEATURES

MINIMUM DIFFERENTIAL WORKING PRESSURE 0,1 bar (models 8332-33-34 0 bar)

PARTS IN CONTACT WITH THE FLUID:

SEALING FPM, NBR for 8332-8333-8334
BODY BRASS
INTERNAL PARTS STAINLESS STEEL
FLUIDS AIR - WATER - INERT GAS - LIGHT OILS

ONE WAY DIRECTION VALVE

SERVICEABLE VALVE

VALVE SUPPLIED WITH

MOUNTING POSITION

AMBIENT TEMPERATURE

SPECIAL EXECUTIONS

THREE POLE PLUG CONNECTOR UNI ISO 4400 (DIN 43650A)-IP65
Any, the position with the coil downwards is not recommended.
80°C, in D.C. for temperatures higher than 40°C, the performances (M.O.P.D.) could decrease.
SEALING IN EPDM, NBR
DIRECT ACTING VERSION (8332,8333,8334)
FOR MODELS 8332,8333,8334, A SPECIAL COIL IS AVAILABLE TO INCREASE PERFORMANCES (M.O.P.D.) IN D.C. TO 0,5 BAR
ADJUSTABLE TIMER TO PRESET DUTY CYCLE. (see accessories at page 95)

ACCESSORIES

D

ALLGEMEINE MERKMALE

MINIMALER DIFFERENTIALARBEITSDRUCK 0,1 bar (Modelle 8332-33-34 0 bar)

MEDIUMS BERUEHRTE ELEMENTE

DICHTUNG FPM, NBR fuer 8332-8333-8334
KOERPER MESSING
INNERE ELEMENTE EDELSTAHL
MEDIEN LUFT-WASSER -EDELGAS—LEICHTE OELE

UNIDIREKTIONALES VENTIL

VENTIL WARTUNGSFREUNDLICH

LIEFERUMFANG

MONTAGEPOSITION

DREIPOLIGER STECKER UNI ISO 4400 (DIN 43650A)-IP65
Keine Einschränkungen. Fuer die Montage mit dem Spulenkopf senkrecht nach unten, auf Anfrage.

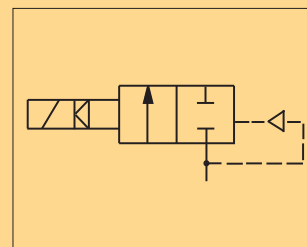
UMGEBUNGSTEMPERATUR

80°C, im D.C-Betrieb koennen Temperaturen ueber 40°C, die Schaltkraefte (M.O.P.D.) des Ventils beeintraechtigen.

SONDERAUSFUEHRUNGEN

DICHTUNG AUS EPDM, NBR
DIREKTGESTEUERTE VERSION: 8332,8333,8334
FUER DIE MODELLE 8332,8333,8334 BESTEHT DIE MOEGLICHKEIT, MITTELS EINER SONDERSPULE DIE SCHALTKRAEFTE (M.O.P.D.) IM D.C.-BEREICH AUF 0.5 BAR ZU ERHOEHE-TIMER FUER REGELUNG DER SCHALTZEITEN (Siehe Zubehoer auf Seite 95)

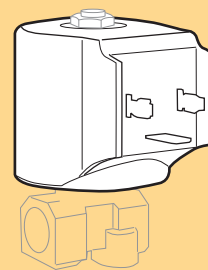
ZUBEHOER



ALTA FREQUENZA D'INTERVENTO
SCARICO CONDENSA COMPRESSORI

HIGH FREQUENCY APPLICATIONS
CONDENSATE DRAIN FOR COMPRESSORS

ANWENDUNGEN MIT HOHER SCHALTHÄUFIGKEIT
ABLAß KONDENSWASSER DER KOMPRESSOREN



BOBINA TIPO B12 M
COIL TYPE B12 M
SPULE TYP B12 M