

# STAINLESS STEEL FITTINGS PN20

ISO 9001:2008

BUREAU VERITAS  
Certification



**Size :** DN 1/8" to DN 4"

**Ends :** Male, female or welding

**Min Temperature :** - 25°C

**Max Temperature :** + 180°C

**Max Pressure :** 20 Bars

**Specifications :** "Lost wax" moulding  
Threaded BSP

**Materials :** Stainless steel

# STAINLESS STEEL FITTINGS PN20

## SPECIFICATIONS :

- “ Lost wax “ moulding
- Male conic threaded BSP
- Female cylindric threaded BSP

## USE :

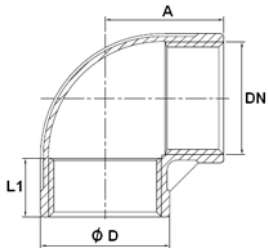
- For all common fluids
- Min Temperature Ts : - 25°C
- Max Temperature Ts :+ 180°C
- Max Pressure PN : 20 bars

## RANGE :

- From DN 1/8“ to DN 4“
- ASTM A351 CF8M fittings excepted for Ref.2034, 2038, 2039, 2040, 2041 and 2042 in SS ASTM A240-09A 316L

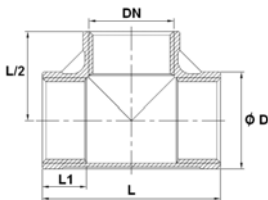
## SIZE ( in mm ) :

- Elbow 90° F. F. ( DN 1/8“– 4“ ) Ref. 2001



DN	1/8"	1/4"	3/8"	1/2"	3/4"	1"	1"1/4"	1"1/2"	2"	2"1/2"	3"	4"
A	17	19	21.5	27	30	35	43	45	54	69	77	92.5
Ø D	13.9	17.4	20.9	24.9	31.2	38.1	47.4	54.1	66.6	82.4	95.9	121.8
L1	6.7	10.2	10.4	13.5	13.9	17.3	18	18.4	19.2	28.9	30.5	33
Weig. (Kg)	0.018	0.029	0.043	0.053	0.079	0.131	0.204	0.263	0.433	0.757	1.083	1.724

- Tee F. F. F. ( DN 1/8“– 4“ ) Ref. 2003

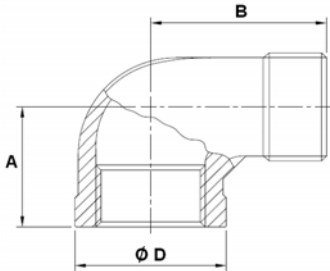


DN	1/8"	1/4"	3/8"	1/2"	3/4"	1"	1"1/4"	1"1/2"	2"	2"1/2"	3"	4"
Ø D	13.9	17.4	20.9	24.9	31.2	38.1	47.4	54.1	66.6	82.4	95.9	121.8
L	34	39	44	55	60	70	85	90	108.5	136	152	182
L1	6.7	10.2	10.4	13.5	13.9	17.3	17.9	18.4	19.2	28.9	30.5	33
Weig. (Kg)	0.026	0.041	0.059	0.073	0.103	0.168	0.260	0.34	0.54	0.878	1.198	2.056

# STAINLESS STEEL FITTINGS PN20

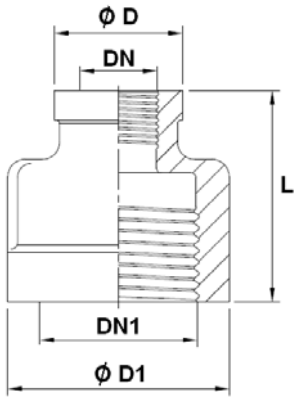
## SIZE ( in mm ) :

- Elbow 90° M. F. ( DN 1/8"– 3" ) Ref. 2010



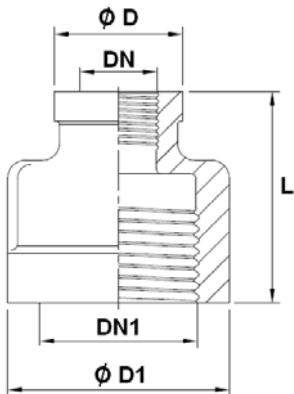
DN	1/8"	1/4"	3/8"	1/2"	3/4"	1"	1"1/4"	1"1/2"	2"	2"1/2"	3"
A	19	21.5	24.5	29	33.5	37	43	47	57.5	66	74
B	26.5	30.8	36.5	41	48	55	62	67	77.5	93	107
Ø D	13.9	17.2	20.9	24.9	31.2	38.1	47.4	54.1	66.6	87.4	101.8
Weig. (Kg)	0.015	0.028	0.043	0.054	0.084	0.139	0.189	0.277	0.412	0.913	1.65

- Reduced nipple F. F. ( DN 1/8"– 2" ) Ref. 2013



DN	1/8"	1/4"	3/8"	1/2"	3/4"	1"	1"1/4"	1"1/2"
DN1	1/4"	3/8"	1/2"	3/4"	1"	1"1/4"	1"1/2"	2"
Ø D	15.5	18.2	23	28	34	41.6	50	57
Ø D1	18	22	28.5	34	41.5	50	57	70
L	24	29	34.5	36.5	41.5	47	51.5	59
Weight (Kg)	0.020	0.030	0.066	0.082	0.115	0.186	0.24	0.387

- Double reduced nipple F. F. ( DN 1/8"– 2" ) Ref. 2014

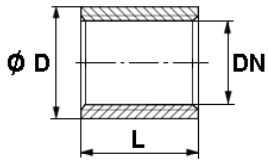


DN	1/8"	1/4"	3/8"	1/2"	3/4"	1"	1"1/4"
DN1	3/8"	1/2"	3/4"	1"	1"1/4"	1"1/2"	2"
Ø D	18.1	19.5	28.2	29	34	41.5	56.5
Ø D1	22	28.5	34	41.5	50	57	70
L	29	34	36.5	42	46	50	59
Weight (Kg)	0.035	0.06	0.092	0.121	0.175	0.235	0.447

# STAINLESS STEEL FITTINGS PN20

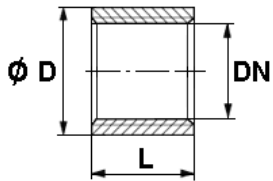
**SIZE ( in mm ) :**

- Socket bright F. F. ( DN 1/8" – 4" ) Ref. 2015



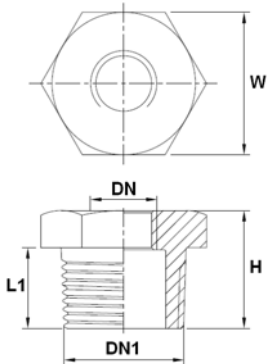
DN	1/8"	1/4"	3/8"	1/2"	3/4"	1"	1"1/4	1"1/2	2"	2"1/2	3"	4"
Ø D	14	18.5	21.5	26.5	32	40	48	55	66	82	95	122
L	17	25	26.5	34	36	43	48	48	56	65	71	83
Weig. (Kg)	0.013	0.031	0.034	0.068	0.084	0.141	0.195	0.235	0.302	0.510	0.670	1.200

- Half socket F. F. ( DN 1/8" – 2" ) Ref. 2017



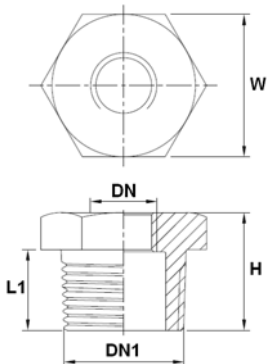
DN	1/8"	1/4"	3/8"	1/2"	3/4"	1"	1"1/4	1"1/2	2"
Ø D	14	19	22	26	32	40	48	55	66
L	10	11	13	16	18	20	22	23	27
Weig. (Kg)	0.008	0.014	0.018	0.029	0.038	0.052	0.086	0.095	0.161

- Reduced nipple M. F. ( DN 1/8" – 2" ) Ref. 2021



DN	1/8"	1/4"	3/8"	1/2"	3/4"	1"	1"1/4	1"1/2
DN1	1/4"	3/8"	1/2"	3/4"	1"	1"1/4	1"1/2	2"
H	17	17.5	22	23	27	30	30	33.5
L1	12.5	13	16	17	20	22	22	23.5
W	17	20	25	30	36.5	45.5	50	62
Weig. (Kg)	0.011	0.017	0.032	0.044	0.072	0.129	0.132	0.262

- Double reduced nipple M. F. ( DN 1/8" – 2" ) Ref. 2024

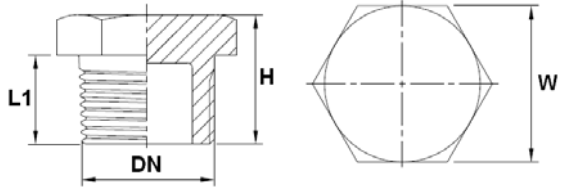


DN	1/8"	1/4"	3/8"	1/2"	3/4"	1"	1"1/4
DN1	3/8"	1/2"	3/4"	1"	1"1/4	1"1/2	2"
H	17.5	22	23	27	30	30	33.5
L1	13	16	17	20	22	22	23.5
W	20	25	30	36.5	45.5	50	62
Weig. (Kg)	0.022	0.036	0.053	0.089	0.158	0.186	0.299

# STAINLESS STEEL FITTINGS PN20

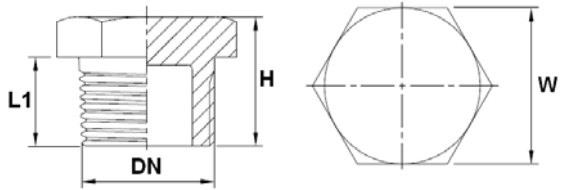
## SIZE ( in mm ) :

- Hexagon hollow plug ( DN 1/2"– 2" ) Ref. 2022



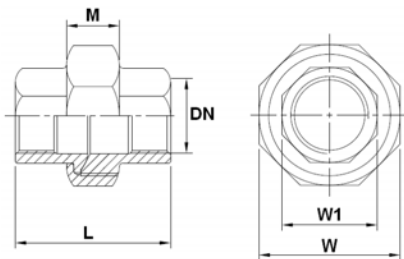
DN	1/2"	3/4"	1"	1"1/4	1"1/2	2"
H	22.6	23.3	26.8	30.5	30.8	34
L1	16	16.5	19	21	21	22.8
W	25.2	29.7	36.5	45.3	51.4	62.5
Weight (Kg)	0.040	0.056	0.087	0.141	0.190	0.280

- Hexagon plain plug ( DN 1/8"– 2" ) Ref. 2023



DN	1/8"	1/4"	3/8"	1/2"	3/4"	1"	1"1/4	1"1/2	2"
H	19	19	19	22	26	28	33	35	39
L1	11	12	13	16	17	19	21	23	27
W	12	16	19	23	28	36	46	50	65
Weig. (Kg)	0.013	0.024	0.036	0.061	0.115	0.198	0.384	0.509	0.913

- Union F.F. ( DN 1/4"– 2" ) Ref. 2025 - Conical seat



DN	1/4"	3/8"	1/2"	3/4"	1"	1"1/4	1"1/2	2"
L	34.5	37.6	38.6	44	51	58	59	61.5
M	12.2	15	15	15	17	20	20	20.8
W	28	34	39.2	46	55	63.5	71	85
W1	17.5	20.5	26.5	31.2	38	47.5	54	67
Weight (Kg)	0.069	0.098	0.149	0.191	0.299	0.386	0.482	0.716

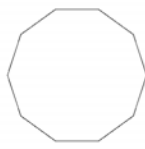
DN 1/4" :



DN 3/8" - 1" :



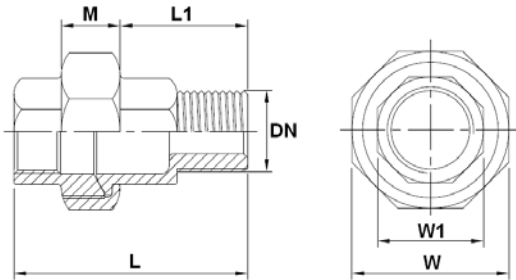
DN 1"1/4 - 2" :



# STAINLESS STEEL FITTINGS PN20

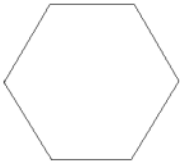
**SIZE ( in mm ) :**

- Union M.F. ( DN 1/4" – 2" ) Ref. 2026 - Conical seat

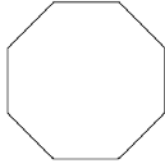


DN	1/4"	3/8"	1/2"	3/4"	1"	1"1/4	1"1/2	2"
L	46	48	52.8	58.6	66.5	73.5	74.5	80.5
L1	22.7	21.5	26	28.6	32.2	35	35	39
M	12.2	15	15	15	17	20	20	20.8
W	28	34	39.2	46	55	63.5	71	85
W1	17.2	20.3	26	30.6	38	47.3	53	66
Weight (Kg)	0.074	0.107	0.164	0.224	0.336	0.443	0.538	0.839

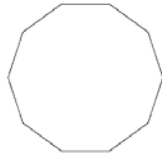
DN 1/4" :



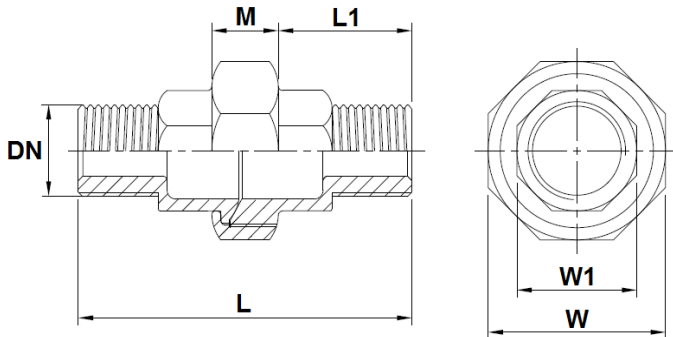
DN 3/8" - 1" :



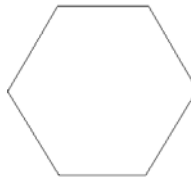
DN 1"1/4 - 2" :



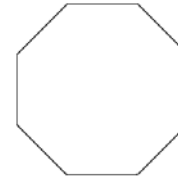
- Union Male - Male ( DN 1/4" – 2" ) Ref. 2062 - Conical seat



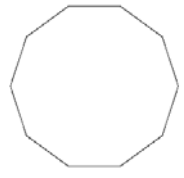
DN 1/4" :



DN 3/8" - 1" :



DN 1"1/4 - 2" :

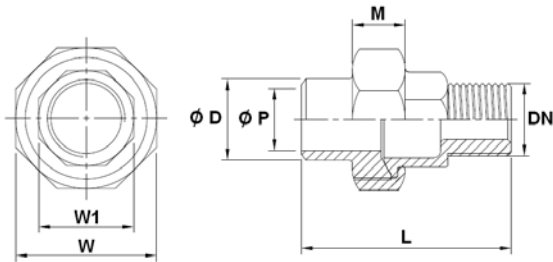


DN	1/4"	3/8"	1/2"	3/4"	1"	1"1/4	1"1/2	2"
L	56	57.5	66.5	73.4	81	89.5	89.3	99
L1	21	21	26.1	29.6	32	34.5	34	39
M	12.2	15	15	15	17	20	20	20.8
W	28	34	39.2	46	55	63.5	71	85
W1	17	20	26.5	31	38.4	47.3	53	66
Weig. (Kg)	0.085	0.112	0.175	0.246	0.358	0.502	0.614	0.946

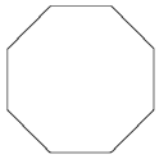
# STAINLESS STEEL FITTINGS PN20

**SIZE ( in mm ) :**

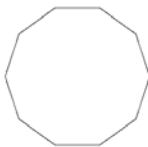
- **Union Male – But Welding ( DN 1/4"– 2" ) Ref. 2027 - Conical seat**



DN 3/8" - 1" :

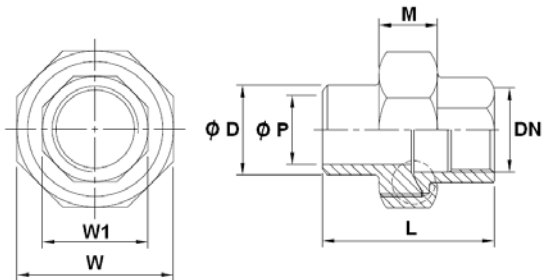


DN 1"1/4 - 2" :

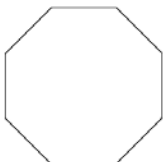


DN	1/4"	3/8"	1/2"	3/4"	1"	1"1/4	1"1/2	2"
Ø D	13.5	17.2	21.5	27	33.7	42.7	48.5	60.5
Ø P	9.4	12.6	16	21.5	27	35.6	41.5	52.7
L	46.4	47.7	53	60	66	72	73	77.6
M	12.2	15	15	15	17	20	20	20.8
W	28	34	39.2	46	55	63.5	71	85
W1	17.2	20.3	26	30.6	38	47.3	53	66
Weight (Kg)	0.069	0.104	0.153	0.225	0.328	0.432	0.535	0.765

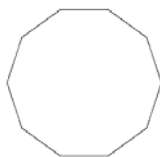
- **Union Female – But Welding ( DN 1/4"– 2" ) Ref. 2028 - Conical seat**



DN 3/8" - 1" :



DN 1"1/4 - 2" :

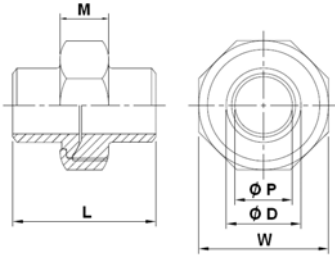


DN	1/4"	3/8"	1/2"	3/4"	1"	1"1/4	1"1/2	2"
Ø D	13.5	17.2	21.5	27	33.7	42.7	48.5	60.5
Ø P	9.4	12.6	16	21.5	27	35.6	41.5	52.7
L	35	38	40	45.7	50	56	57	58.6
M	12.2	15	15	15	17	20	20	20.8
W	28	34	39.2	46	55	63.5	71	85
W1	17.4	20.3	26.5	31	38	47.3	53.3	66.5
Weight (Kg)	0.065	0.113	0.145	0.185	0.290	0.395	0.465	0.675

# STAINLESS STEEL FITTINGS PN20

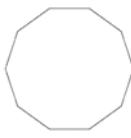
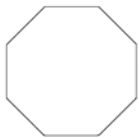
## SIZE ( in mm ) :

- Union B.W. – B.W. ( DN 8– DN 50 ) Ref. 2029 - Conical seat



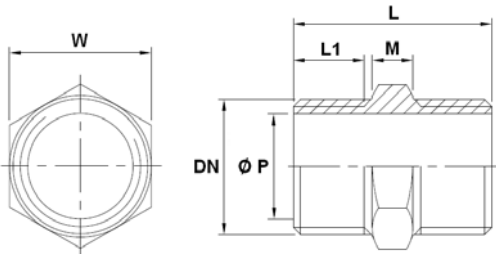
DN 3/8" - 1" :

DN 1"1/4 - 2" :



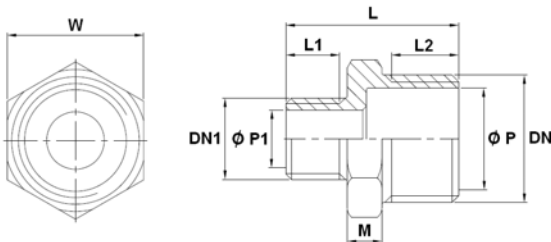
DN	8	10	15	20	25	32	40	50
Ø D	13.5	17.2	21.5	27	33.7	42.7	48.5	60.5
Ø P	9.4	12.6	16	21.5	27	35.6	41.5	52.7
L	34.5	38.5	40	47.5	49.6	54.8	55	57.4
M	12.2	15	15	15	17	20	20	20.8
W	28	34	39.2	46	55	63.5	71	85
Weight (Kg)	0.06	0.107	0.144	0.203	0.310	0.42	0.510	0.765

- Hexagon nipple ( DN 1/8"– 2" ) Ref. 2030



DN	1/8"	1/4"	3/8"	1/2"	3/4"	1"	1"1/4	1"1/2	2"
L	26	30	30	40	40.5	48	49.5	49.5	52.5
L1	9	11	11	14	14	17.5	18	18.5	20
M	5.6	6	6	7.6	8.5	8	9.5	9.5	10.5
Ø P	5.5	8.2	11.8	15.2	21	26.5	35	41	53
W	13	15	18	23	29	35	45	50	62
Weig. (Kg)	0.012	0.019	0.023	0.046	0.062	0.104	0.152	0.169	0.231

- Reduced nipple male - male ( DN 1/8"– 2" ) Ref. 2031



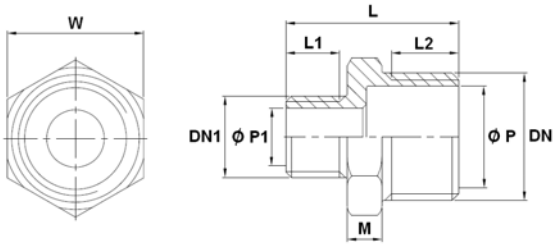
DN	1/4"	3/8"	1/2"	3/4"	1"	1"1/4	1"1/2	2"
DN1	1/8"	1/4"	3/8"	1/2"	3/4"	1"	1"1/4	1"1/2
L	29	32	36	39	45	50	50.5	52
L1	10	11	12	14	14	17.5	18	18.5
L2	11	12	14	14	17.5	18	18.5	20
M	6	7	7	7	9	10	10.5	11
Ø P	8.2	11.8	15.2	21	27	35	41	51.8
Ø P1	5.5	8.2	11.8	15.2	21	27	35	41
W	15	18	23	29	35	45	50	62
Weight (Kg)	0.016	0.025	0.041	0.057	0.088	0.151	0.184	0.267



# STAINLESS STEEL FITTINGS PN20

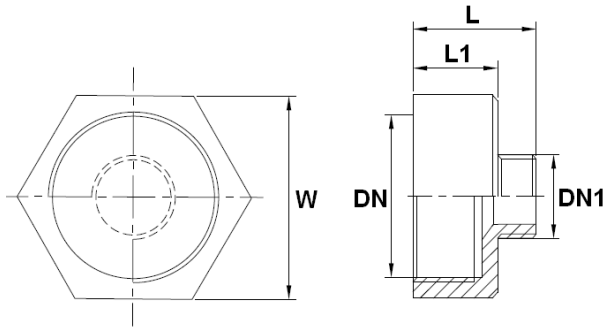
## SIZE ( in mm ) :

- Double reduced nipple male - male ( DN 1/8"– 2" ) Ref. 2032



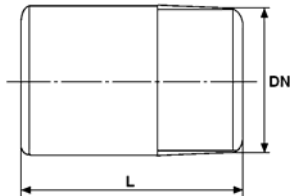
DN	3/8"	1/2"	3/4"	1"	1"1/4	1"1/2	2"
DN1	1/8"	1/4"	3/8"	1/2"	3/4"	1"	1"1/4
L	31	35	36	45	46	50.5	52
L1	10	11	12	14	14	17.5	18
L2	12	14	14	17.5	18	18.5	20
M	7	7	7	9	10	10.5	11
Ø P	11.8	15.2	21	27	35	41	51.8
Ø P1	5.5	8.2	11.8	15.2	21	27	35
W	18	23	29	35	45	50	62
Weight (Kg)	0.022	0.039	0.051	0.093	0.143	0.187	0.281

- Reduced nipple female - male ( DN 1/8"– 2" ) Ref. 2033



DN	1/4"	3/8"	1/2"	3/4"	1"	1"1/4	1"1/2	2"
DN1	1/8"	1/4"	3/8"	1/2"	3/4"	1"	1"1/4	1"1/2
L	27	31	35	38.5	44	47	50	53
L1	16.5	18.5	22	23	26	27	28	30
W	17	21	26	32	38	46	54	63
Weig. (Kg)	0.024	0.039	0.068	0.104	0.127	0.170	0.265	0.290

- Welding nipple L=50 mm ( DN 1/4"– 2" ) Ref. 2034

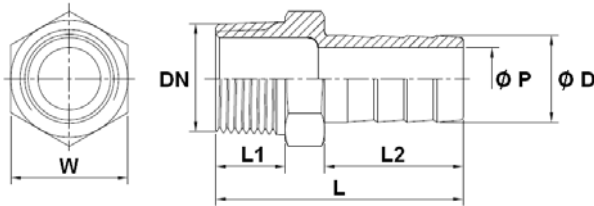


DN	1/4"	3/8"	1/2"	3/4"	1"	1"1/4	1"1/2	2"
L	50	50	50	50	50	50	50	50
Weig. (Kg)	0.025	0.039	0.058	0.079	0.093	0.135	0.16	0.215

# STAINLESS STEEL FITTINGS PN20

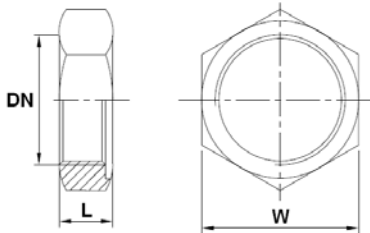
## SIZE ( in mm ) :

- Hose nozzle ( DN 1/4"– 2" ) Ref. 2035



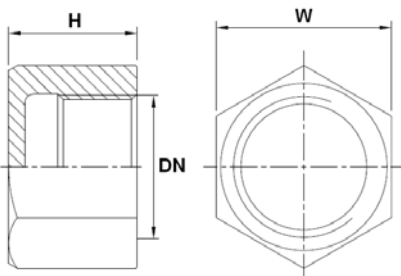
DN	1/4"	3/8"	1/2"	3/4"	1"	1"1/4	1"1/2	2"
L	43	49	56.5	60	69	70	80	88
L1	11.5	13	15	15.5	19	22	22	22.5
L2	25	29.5	33	34	39	37	47.5	53.5
Ø D	8	10	13	20	25	32	40	51.5
Ø P	4	5	7	15	19.5	26.5	33.5	44
W	15	19	23	28	37	45	50	62
Weig. (Kg)	0.020	0.034	0.055	0.084	0.133	0.196	0.286	0.44

- Hexagon nut ( DN 1/8"– 2" ) Ref. 2036



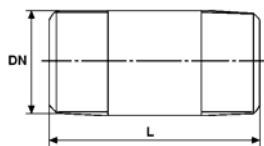
DN	1/8"	1/4"	3/8"	1/2"	3/4"	1"	1"1/4	1"1/2	2"
L	6.3	7	7.5	7.7	9.2	9	11.7	11.8	13.1
W	17.3	19.1	25.3	30.1	34.4	43.2	52	58.1	71.9
Weig. (Kg)	0.008	0.009	0.018	0.024	0.032	0.048	0.086	0.097	0.155

- Female hexagon cap ( DN 1/4"– 2" ) Ref. 2037



DN	1/4"	3/8"	1/2"	3/4"	1"	1"1/4	1"1/2	2"
H	17	17.5	20	20.4	27.1	30	30.3	32.3
W	17.5	21.2	25.5	30.1	37.4	47	53.2	66
Weight (Kg)	0.022	0.031	0.042	0.051	0.095	0.153	0.188	0.304

- Barrel nipple L=100 mm ( DN 1/4"– 2" ) Ref. 2038

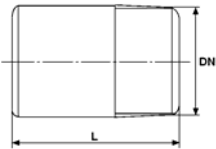


DN	1/4"	3/8"	1/2"	3/4"	1"	1"1/4	1"1/2	2"
L	100	100	100	100	100	100	100	100
Weight (Kg)	0.051	0.063	0.105	0.127	0.185	0.229	0.262	0.39

# STAINLESS STEEL FITTINGS PN20

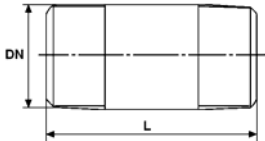
**SIZE ( in mm ) :**

- Standard welding nipple ( DN 1/4"– 4" ) Ref. 2039



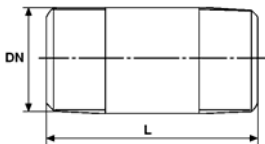
DN	1/4"	3/8"	1/2"	3/4"	1"	1"1/4	1"1/2	2"	2"1/2	3"	4"
L	22	23	27	33	35	36	41	46	55	70	80
Weig. (Kg)	0.010	0.013	0.025	0.037	0.061	0.074	0.106	0.160	0.256	0.461	0.745

- Standard barrel nipple ( DN 1/4"– 4" ) Ref. 2040



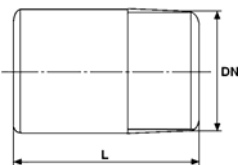
DN	1/4"	3/8"	1/2"	3/4"	1"	1"1/4	1"1/2	2"	2"1/2	3"	4"
L	40	40	60	60	60	80	80	100	100	120	120
Weig. (Kg)	0.019	0.022	0.058	0.066	0.1	0.178	0.193	0.390	0.438	0.753	1.043

- Barrel nipple L=200 mm ( DN 1/4"– 2" ) Ref. 2041



DN	1/4"	3/8"	1/2"	3/4"	1"	1"1/4	1"1/2	2"
L	200	200	200	200	200	200	200	200
Weight (Kg)	0.102	0.126	0.210	0.254	0.370	0.458	0.524	0.780

- Welding nipple L=100 mm ( DN 1/4"– 2" ) Ref. 2042



DN	1/4"	3/8"	1/2"	3/4"	1"	1"1/4	1"1/2	2"
L	100	100	100	100	100	100	100	100
Weight (Kg)	0.050	0.078	0.116	0.158	0.186	0.270	0.32	0.430

# STAINLESS STEEL FITTINGS PN20

## **STANDARDS :**

- Fabrication according to ISO 9001 : 2008
- DIRECTIVE 97/23/CE : Products excluded from directive ( Article 1,§3.2 )
- Size according to ISO 4144
- Male conical BSP threaded according to ISO 7/1 R for Ref. 2010, 2021, 2022, 2023, 2024, 2026, 2027, 2030, 2031, 2032, 2033, 2034, 2035, 2038, 2039, 2040, 2041, 2042 and 2062
- Female cylindrical BSP threaded according to ISO 228-1 for Ref. 2015 and 2017
- Female cylindrical BSP threaded according to ISO 7/1 Rp for Ref. 2001, 2003, 2010, 2013, 2014, 2021, 2024, 2025, 2026, 2028, 2033, 2036 and 2037

**ADVICE :** Our opinion and our advice are not guaranteed and SFERACO shall not be liable for the consequences of damages.  
The customer must check the right choice of the products with the real service conditions.